

# PUBLIC CONSULTATION

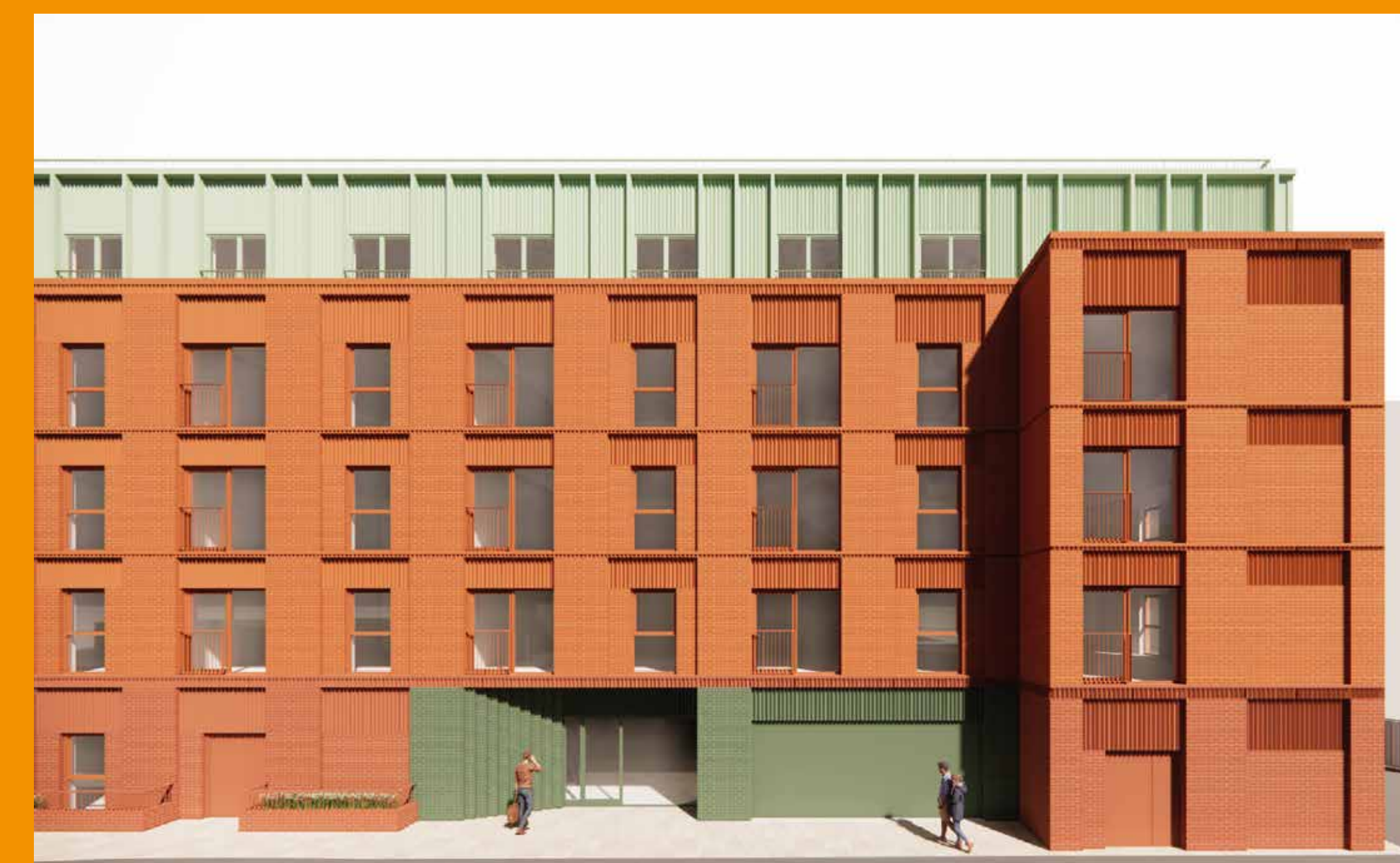
Residential Development on lands at Wilson Street, Belfast

## What's Coming

### Proposed North Elevation



### Proposed Finishes



<b>Walls</b>	Dark red brick Red brick Heritage green brick Pre-cast stone lintels with dog tooth pattern Pre-cast stone strong course with dog tooth pattern
<b>Roof</b>	Grey single ply membrane (to core roof) Concrete pavers and grass (to roof terrace) Patented green PPC profiled aluminium (to attic)
<b>Windows</b>	Green PPC aluminium Green PPC aluminium Double glazed units Green PPC steel balustrades Red precast concrete panels (Dogtooth profile)
<b>Doors</b>	Doors Green PPC aluminium with DGU's Green PPC aluminium with DGU's Green PPC aluminium with no glazing (to cores) Green PPC steel roller shutters (to car park entrance)
<b>Boundary fence</b>	Red brick Green PPC steel balustrades
<b>Lighting</b>	Wall mounted bulkhead fittings will be provided to ground floor brick piers adjacent to all doors.

### Proposed East Elevation



### Proposed South Elevation



### Proposed West Elevation

